



**BURCH KISER
REAL ESTATE, LLC**

Commercial & Industrial Real Estate
Brokerage / Management Services
www.jamesburch.com

Mahomet
809 S. Prairieview Rd.

Property For: **Sale**



DESCRIPTION

The property is conveniently located just north of I-74 on Prairieview Rd, Mahomet, IL.

Sale of this fully equipped Restaurant includes the land, building and all the Furniture Fixtures and Equipment currently on the premises. The original building features Kitchen, Dining areas, and a large Bar. The enclosed porch has a lot of potential for uses during nice weather, or could easily be converted to year around space.

Seating Capacity: 213

SPECIFICATIONS

Main Building: 6,360 sq.ft. (Built in 1997)
Enclosed Porch: 1,307 sq.ft.
Total: 7,667 sq.ft.

Land Size: 0.97 ac (Approx 136'x 310')

Zoning: C-2 General Commercial
(Village of Mahomet)

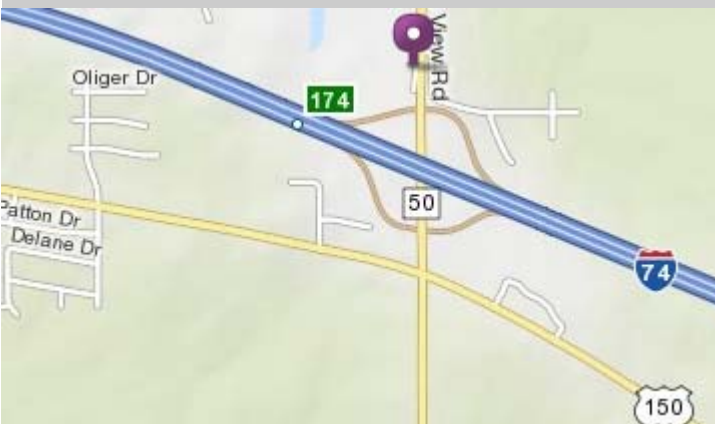
Real Estate Taxes (2009 payable 2010):

- PIN: 15-13-13-306-003 \$14,923.08
- PIN: 15-13-13-306-004 \$583.48
- Total:** \$15,506.56

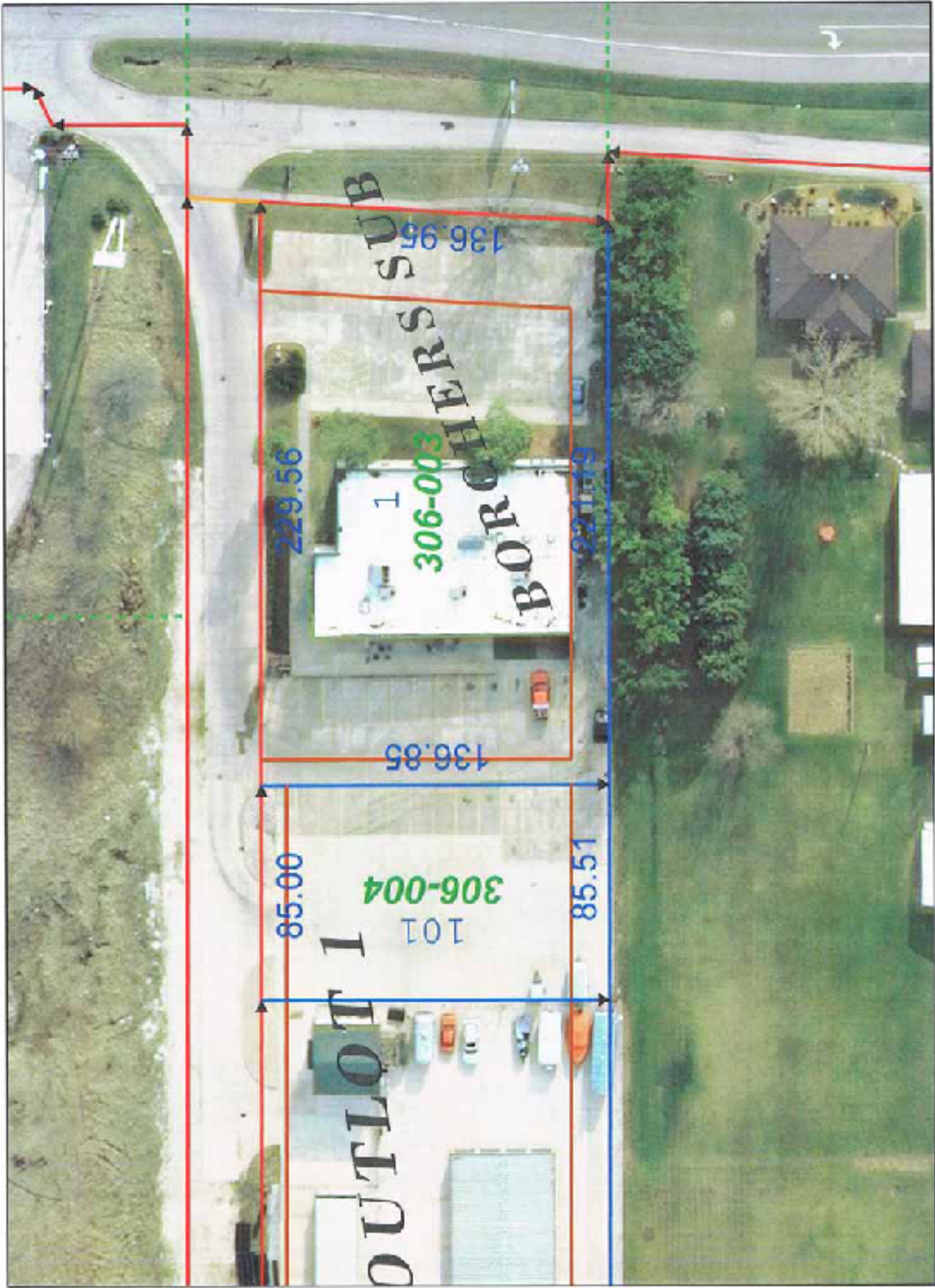
Price: \$600,000

MORE INFORMATION?

For additional information, please contact James Burch or John Kiser at **217-359-8333**. Burch Kiser Real Estate is the agent for, and therefore represents, the Seller.







1 inch = 50 feet

THE INFORMATION
 CONTAINED
 HEREIN IS
 UNOFFICIAL

1/21/19