



# BURCH KISER REAL ESTATE, LLC

Commercial & Industrial Real Estate  
Brokerage / Management Services  
www.jamesburch.com

# Champaign

## 4110 Fieldstone

Property For: **Lease**



### DESCRIPTION

Flexible Office space in an attractive building located in Westwood Trace Commercial Park. Westwood Trace is conveniently located in west Champaign, close to the intersection of Springfield Ave. and Staley Road. Attractive Brick building in a professional business park environment.

### FLOOR PLAN

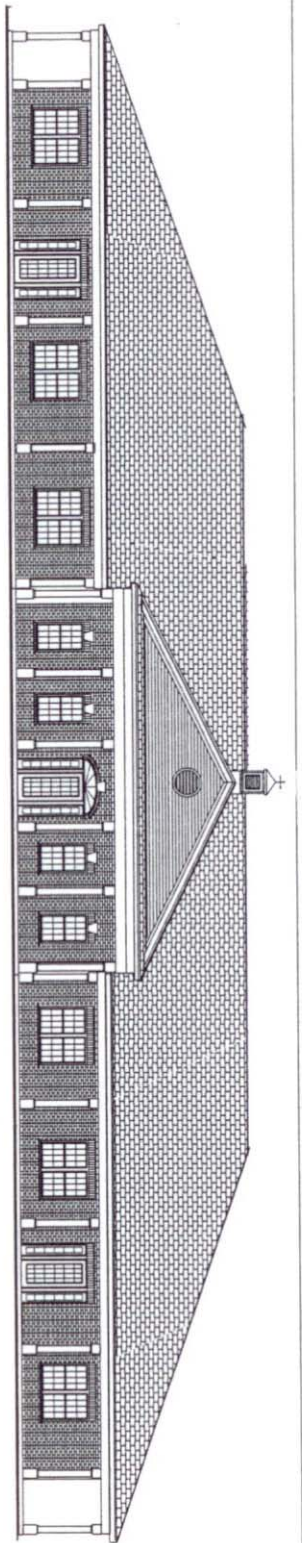
### SPECIFICATIONS

Unit	Size	Price*
B	Office: 1,733 Sq. Ft.	\$10.50/Sq. Ft.
	Warehouse: 1,375 Sq. Ft.	\$7.00/Sq. Ft.
C	Office: 1,388 Sq. Ft.	\$12.00/Sq. Ft.
E	Office: 1,000 Sq. Ft.	\$12.00/Sq. Ft.

\*Lease to include a Real Estate Tax Stop.

### MORE INFORMATION?

For additional information, please contact James Burch or John Kiser at **217-359-8333**. Burch Kiser Real Estate is the agent for, and therefore represents, the Lessor.



**FIELDSTONE PLAZA**  
 WESTWOOD TRACE COMMERCIAL PARK  
 A HALLBECK DEVELOPMENT (217) 359-7799  
 UNITS A,B,C,D& E  
 4110 FIELDSTONE RD. CHAMPAIGN, IL 61822  
 BUILDING TOTAL=10,983 SQ. FT.      UPDATED: 6/15/04

