



**JAMES BURCH**

Commercial & Industrial Real Estate  
Brokerage / Management Services  
www.jamesburch.com

Urbana  
**2611 N. Lincoln Ave.**

Property For: **Lease**



## DESCRIPTION

## SPECIFICATIONS

Corporate Quality Office space located in the Supervalu facility, just north of the I-74 Lincoln Ave. exit. It features an open floor plan, 8 private offices, conference room, large open area and 2 restrooms.

**LINCOLN AVE. AT I-74**

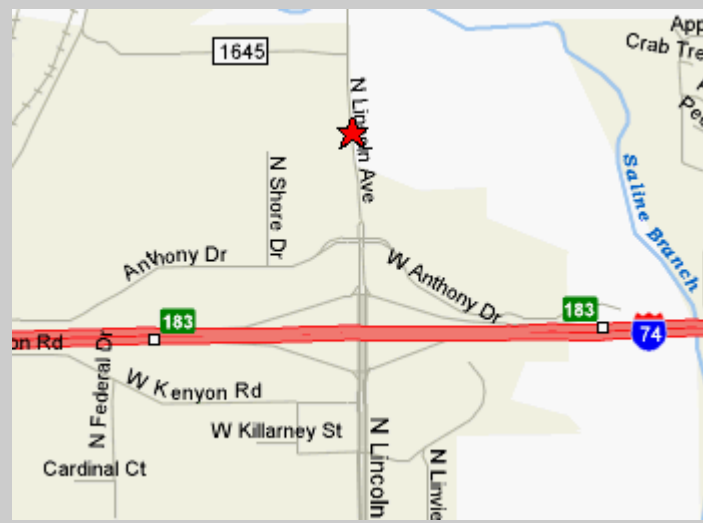
### Office Space

**Size:** 7,053 Sq. Ft.

- Ample Parking
- 8 Private Offices
- Large open area
- 2 Restrooms

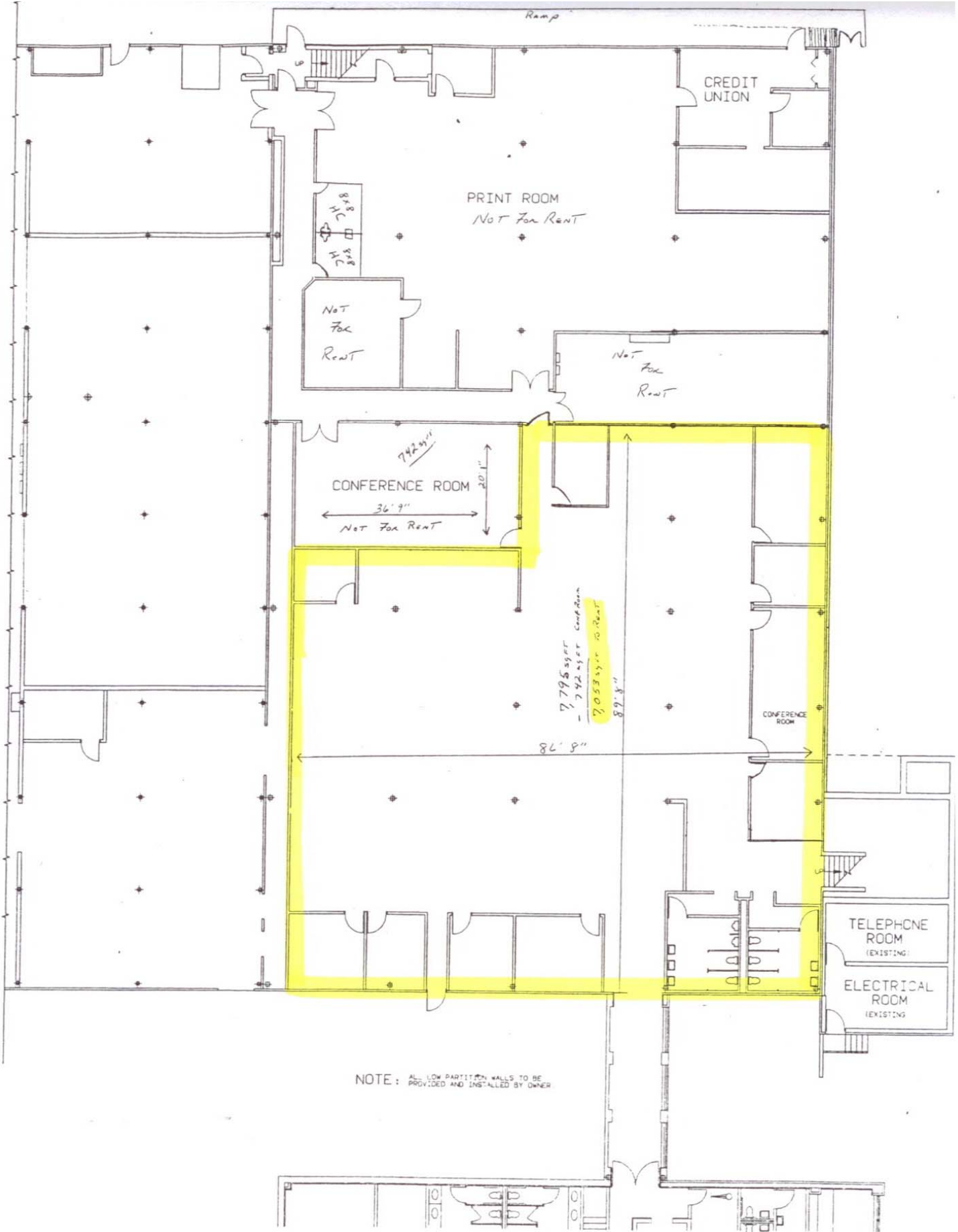
**Price:** \$8.50 per Sq. Ft.  
Including Utilities

## MAP



### **MORE INFORMATION?**

For additional information, please contact James Burch or John Kiser at **217-359-8333**. James Burch Realty is the agent for, and therefore represents, the Lessor.



NOTE: ALL LOW PARTITION WALLS TO BE PROVIDED AND INSTALLED BY OWNER.